

SAFE FOOD CADRE 2022

INSTRUCTIONS FOR CANDIDATES

S.NO	PROBABLE QUERY	RESPONSE
1	Test Mode	Auto-Proctored Online (Browser or Android MobileApp)
2	Compatible Browser	Chrome / EDGE / FireFox on Windows OS
3	Android Mobile Test App version	Latest version 4.1.8
4	Download Mobile App from URL (Only for Android OS)	https://sfc2022exam.icalibrator.com/apks/icalibrator.apk
5	Exam Server Address (ESA URL)	https://sfc2022exam.icalibrator.com
6	Access Exam Server	Type ESA URL on Compatible Browser on Laptop/Desktop OR Type ESA URL in the login screen of Mobile App. (Ensure you type https://)
7	Exam Server Login Credentials	SFC-2022 Registration Portal Email & Password (On Browser and Mobile App both)
8	Mandatory Downloads (Only for Browser)	SECURE EXAM CONTROLLER (SEC.exe) file for Browser on Windows OS. (No need to download for Mobile App)
9	Where to download SEC.exe file from? How to run it ?	Download it from URL (https://sfc2022exam.icalibrator.com/apks/SEC.exe). Right Click & Run it as an administrator. Minimize the screen that reads as < Exam mode is active and exit this application after your exam is over >. Run this file after you have configured the browser and just before typing log-in credentials of the exam server.
10	Mock & Final Exam Server & login credentials	Exam Server URL (https://sfc2022exam.icalibrator.com) AND exam login credentials (same as SFC-2022 registration portal login credentials) remain same.
11	Objective of Mock Test	Objective of the Mock Test is a) To ensure that your browser or/and android mobile app configuration is/are done correctly. b) To familiarize with the test portal / app workflow AND the type of questions you may get in the final exam.
12	How do candidates know if her/his (Laptop/Desktop/Tablet/Mobile) Browser is configured?	Make sure test “Expected to start in.....min” or “START EXERCISE” button (on exam server after successful login) is seen in WHITE text (Active Button), if seen in GREY text means either your device OS/Browser is blocking camera permissions or camera permissions are not given by the candidate. Read browser setup instructions carefully.
13	Can I take test on my tablet/mobile browser?	No, The android mobile device app is designed to work on your android mobile and tablet. We recommend using the latest android app.
14	How do candidates know if her/his (Tablet/Mobile) App is configured?	Ensure Mobile APP version (4.1.8) is same as mentioned in this instruction document. Check for any spelling mistakes in the username/password. Make sure the Exam Server address should start with https:// . The appearance of message on the test app screen saying that the <SFC-2022 MOCK DATE> test shall start at <TIME> means app is configured correctly. (# TIME shall be as per test schedule)
15	Should I configure both, Device Browser and Mobile App?	You have a flexibility to keep your device browser & mobile app both configured & tested during MOCK test so that you may choose any option on the day of the final test. Preferably, Use the same device (MOBILE/LAPTOP/DESKTOP) and the same test mode (MOBILE APP or BROWSER on Windows Device) for which configuration is done & tested during MOCK test.
16	What if my login credentials are not working?	Your Login and Password WILL NOT work (on mobile app & browser both) when the test server is OFF. The test server shall be OFF from 1 st Aug 2022 till 20 th Sep 2022. If login credentials don't work during MOCK TEST Month (1 st July 2022 – 31 st July 2022), pls escalate it to +9811812307 on WhatsApp with your name, login email, password & error screenshot.

Instructions for Windows Browser Configuration

Type the URL <https://sfc2022exam.icalibrator.com> in your browser.

Download SEC.exe file & run it after (or whenever prompted) the following browser configuration is done. **(Read point no 9 in the above table)**

CAUTION:

Windows Defender or Android Security may prompt you <Don't RUN this application as it's not safe >. Click on details & Click on < Run Anyways > .

If you lose internet connection for any reason during exam, you need to exit the SEC.exe application (Stop by clicking on "x" mark / Restart the application/Reboot Device, if required) before reconnecting to the internet source. Once Internet connection is established, you need to (download SEC file, if deleted in the previous step and) restart the SEC.exe file again as explained above. (This file is not required if you are taking test on android mobile app.)

In the login page which is displayed enter your LOGIN ID & PASSWORD

(ensure you have already configured the browser as explained below & you have run SEC application as an administrator as explained in point no 9 above)

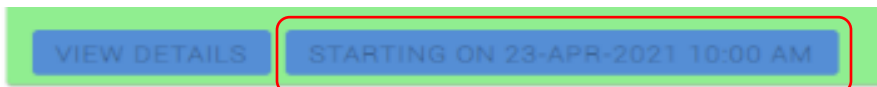
Click on the Login button.

It will ask your permission for camera and audio, please give these permissions otherwise you will not be able to continue with the test.

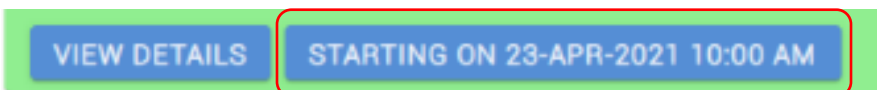
- Ensure browser (Firefox/Chrome/EDGE) on your Laptop/Desktop has been pre-configured to allow Camera & Microphone permissions. If not done already, Pls follow as below
Open Chrome (or your preferred browser).
At the top right, click more. Settings.
Under "Privacy and security," click Site settings.
Click Camera or Microphone. Turn on or ask before accessing. Review your blocked and allowed sites. <https://sfc2022exam.icalibrator.com> should be your allowed site.

HOW WOULD YOU KNOW IF BROWSER CAMERA PERMISSION IS DONE?

If Camera & Microphone Permissions are NOT done properly, text is GREYED OUT.



If Camera & Microphone Permissions are DONE properly, text is seen in WHITE color.



If Camera & Microphone Permissions are DONE but text is still showing greyed out

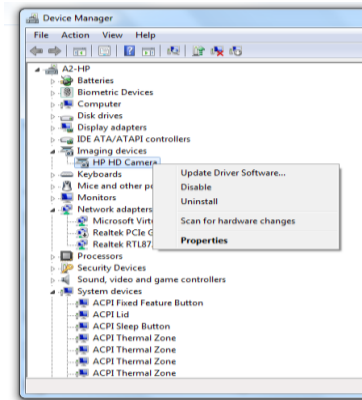
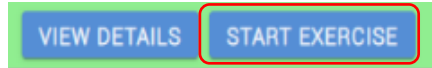
Ensure your Laptop/Desktop hardware configuration (in this case Camera) is properly functioning OK. Go to START....Click/Search CONTROL PANEL....Click DEVICE MANAGER (look under Devices & Printers).....Select Imaging Devices...Right Click on Camera & Enable it. The Confirmation message should show that this device is working properly.

a) Update Device Driver

b) If Required, Uninstall Camera & Re-boot the Laptop/Desktop

WARNING: You will not be able to proceed with the test and the START EXERCISE button, on your online test portal, shall remain deactivated till your device (Laptop/Desktop) camera permission is not done.

ONCE CAMERA PERMISSION IS DONE, STARTING on <DATE> at <TIME> (before the test time) AND START EXERCISE BUTTON (at test time) SHALL BE SEEN WITH WHITE TEXT.



ERROR in TEST START TIME SHOWN:

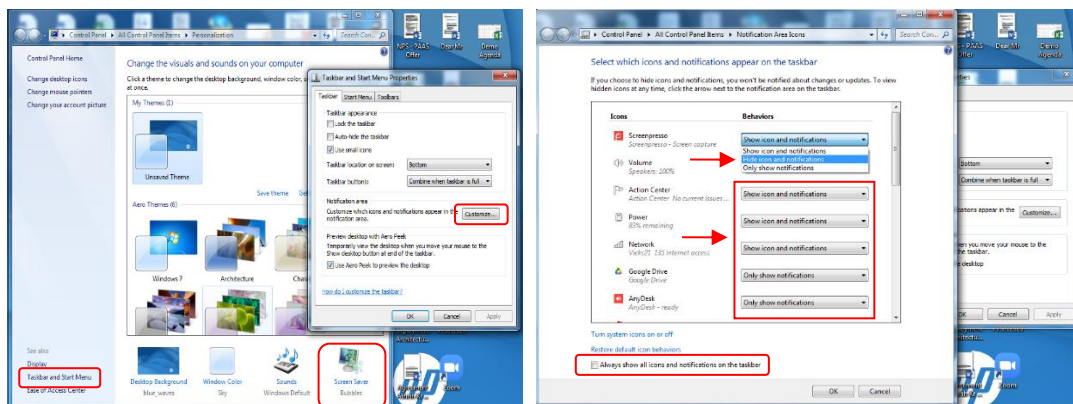
If Time & Time Zone are not selected, the same test which is supposed to start on 23rd April at 10:00 AM (as per sample images shown here for explanations) would be seen starting at some other time (say 1:50 PM

below), so check and ensure your Laptop/Desktop Date is correct & Time is set at (UTC+05:30) Chennai, Kolkata, Mumbai, New Delhi. **WHATEVER BE THE CASE, TEST SHALL ALWAYS START AT DESIGNATED TIME ONLY.** (Always refer time by your watch to take the test irrespective of whatever time it shows on your laptop/desktop because of configuration error)

NOTIFICATIONS OFF:

Ensure your device sleep/hibernation time is more than paper duration / Screen Saver (in case of no activity on screen) is more than 180 minutes or No Screen Saver.

Ensure your device operating system or any application (say email/antivirus/browser/app etc) notifications are OFF. In case you get any notification during test, pls don't try to click on it. Let the notification pop-up vanish automatically without you clicking on "X" mark otherwise you shall get logged out



Right click on the desktop, click on personalize

a) Click on Screen Saver & Select NONE from the dropdown.

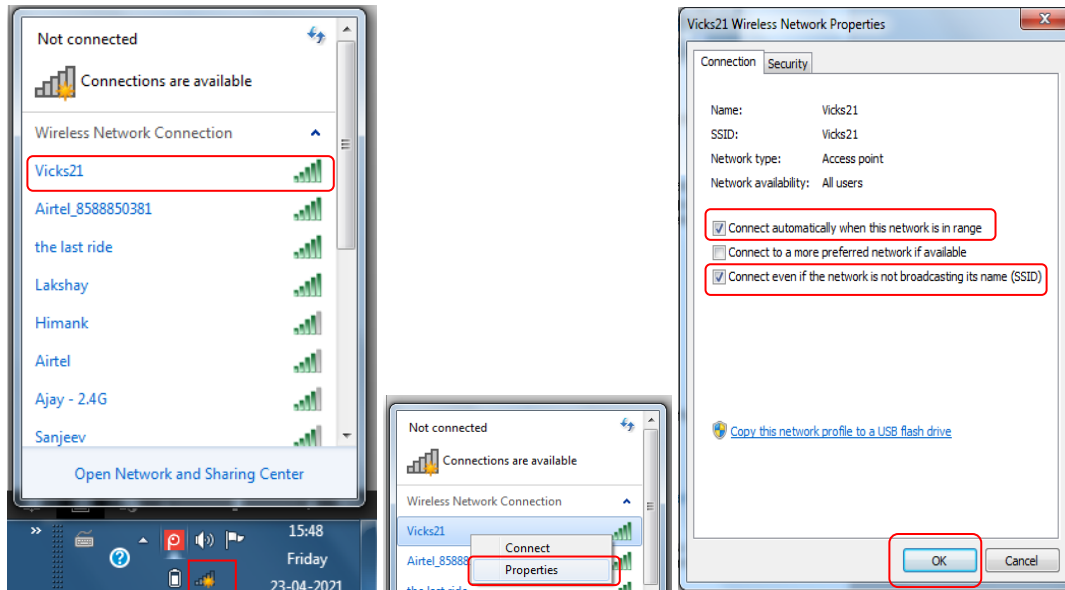
b) Click on < TASKBAR and START MENU >, click < CUSTOMISE >, select < Hide icon & notifications > for all icons and UNCHECK < Always show all icons & notifications on the taskbar. Click OK.

BATTERY & UNINTERRUPTED INTERNET:

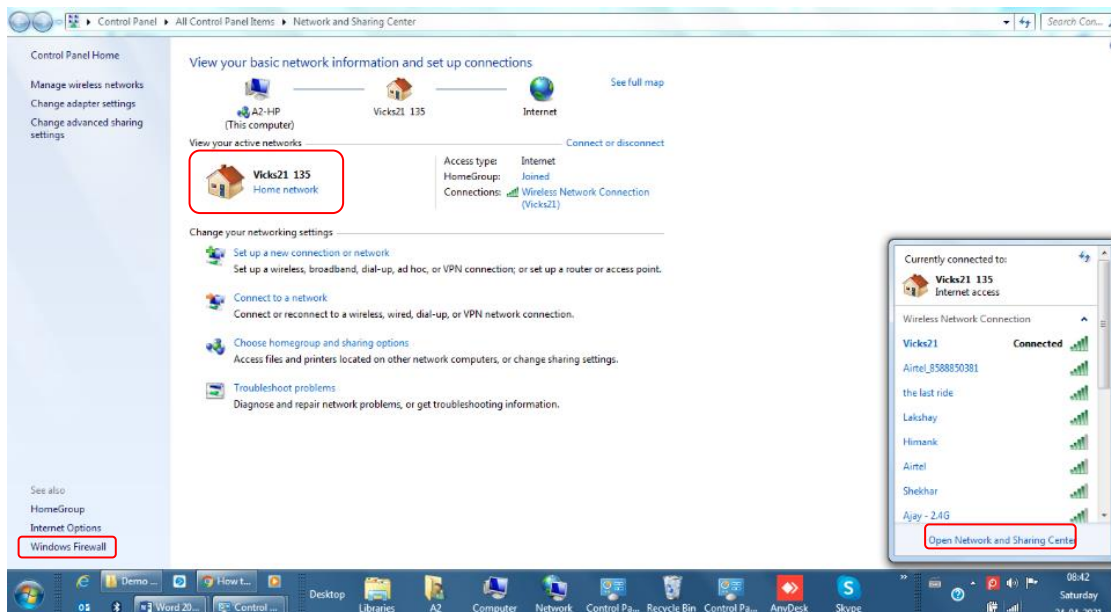
Ensure your device has full battery backup & charged on continuous mode during test.

Ensure your home Wi-Fi and/or mobile hotspot credentials are saved (as PRIVATE/HOME network) for connecting it automatically so that you don't need to go out of test screen in case of internet connection network switching requirement. You shall be logged out in case you move out of test screen & may get disqualified as per exam policies.

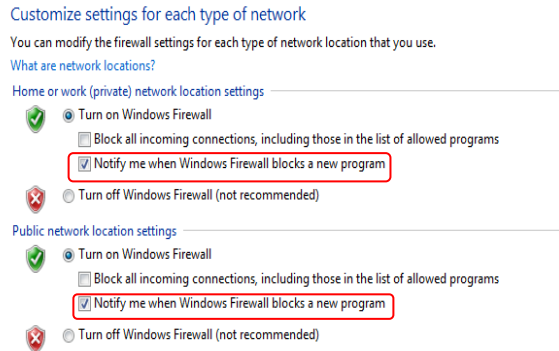
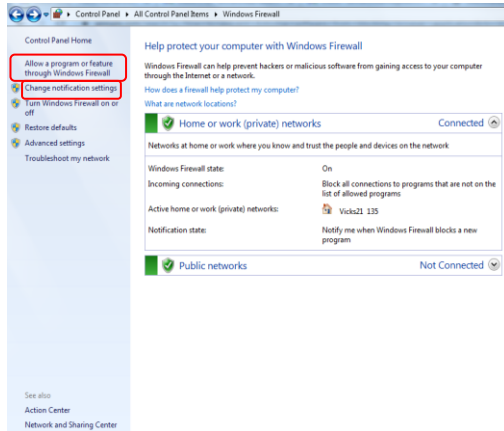
Click on < Wi-Fi multiple bars signal >, Select your Wi-Fi / HOTSPOT NETWORK (here Vicks21), Right Click & Select Properties, Click Connection, if taking test from home, preferably SELECT ALL THE THREE OPTIONS (in the picture above, two minimum options are selected), click OK.



WINDOWS FIREWALL SETTINGS:



Click < Open Network & Sharing Center >, Choose HOME network for your Wi-Fi/Mobile Hotspot.
 Click < Windows Firewall >, Click < Notification Settings >
 Check/Select < Notify me when windows firewall blocks a program >



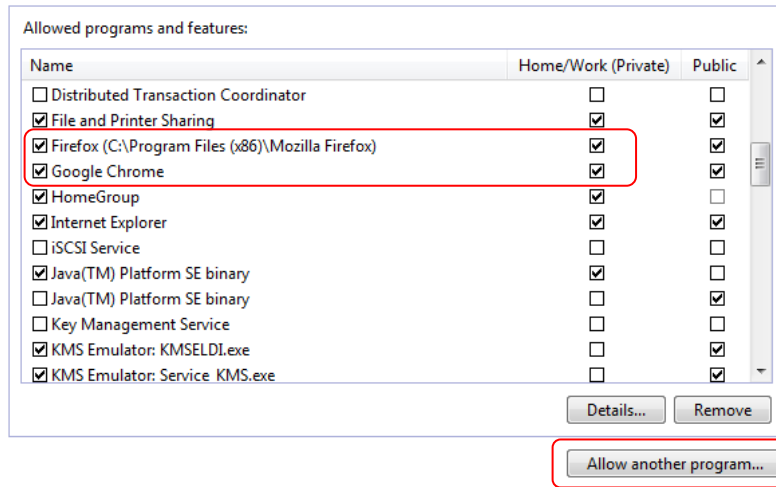
Click < Allow a program or feature through Windows Firewall >
 Select Firefox, Google Chrome, and EDGE, check it for Home/Work (Private) and checking it for Public is optional.

Allow programs to communicate through Windows Firewall

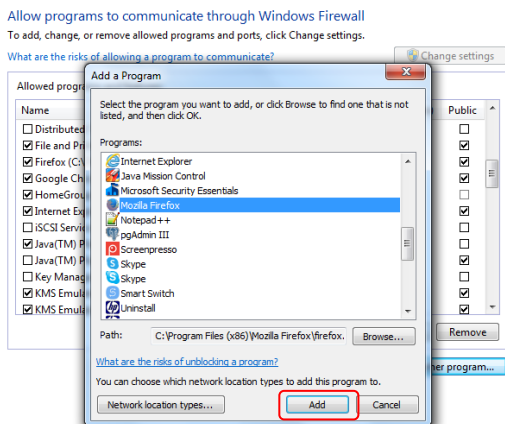
To add, change, or remove allowed programs and ports, click Change settings.

What are the risks of allowing a program to communicate?

Change settings



If you don't see your preferred browser in the ALLOWED PROGRAMS & FEATURES list,
 Click < Allow another program >, Select the Browser & Add.

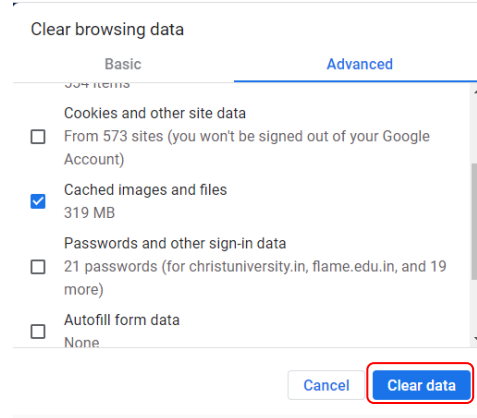


CLEAN BROWSER CACHE

Ensure your Browser Cache is cleaned. If not done already,
Pls follow as below
Open Chrome.

At the top right, click more. Click More Tools, Clear Browsing
Data

Select all time, Next to “Cookies & other site data” (OPTIONAL
but preferable) and “Cached images & files” check the boxes.
Click Clear Data.



Pls refer to Microsoft Support Site for Camera issues, if required.

<https://support.microsoft.com/en-in/help/13753/windows-10-camera-does-not-work#:~:text=Give%20your%20apps%20permission&text=To%20let%20your%20device%20access.Camera%20access%20for%20this%20device>

GO TO BROWSER THREE DOTS on top right corner

Click Settings

Select PRIVACY & SECURITY

Select SITE SETTINGS

Select CAMERA ON

Select MICROPHONE ON

Select BACKGROUND SYNC ON,

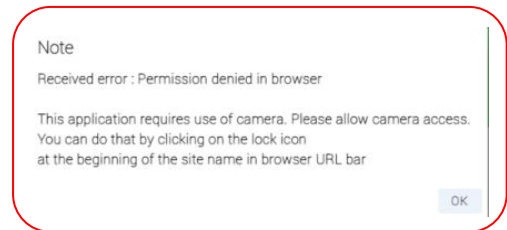
Add & Allow Test Server URL (<https://sfc2022exam.icalibrator.com>)

Under CONTENT,

Keep JAVASCRIPT as Allowed

Keep Pop-ups & Redirects as BLOCKED

IF CAMERA PERMISSION PROBLEM STILL PERSISTS,



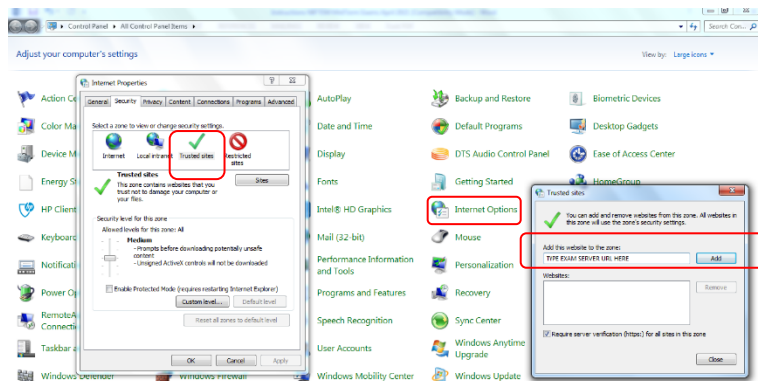
GO TO WINDOWS START, Click
CONTROL PANEL, Click INTERNET
OPTIONS

Click Security Tab, Click TRUSTED SITES,
Type TEST SERVER URL

(<https://sfc2022exam.icalibrator.com>)

Click Add (to Trusted Sites).

FIREFOX OR MICROSOFT EDGE is preferred to CHROME browser on OS Windows10 & Windows 11.



HINT : CLOSE ALL PROGRAMS or APPLICATIONS or WEBPAGES THAT USE YOUR DEVICE CAMERA. FOR SECURITY, TEST SOFTWARE/BROWSER APPLICATION DETECTS & DOESN'T ALLOW DEVICE CAMERA TO BE USED BY ANY OTHER APPLICATION OTHER THAN TEST SOFTWARE. MAKE SURE NO APPLICATION IS ALLOWED TO USE DEVICE CAMERA IN THE BACKGROUND. DEACTIVATE ALL SUCH SETTINGS & REBOOT YOUR DEVICE BEFORE SETTING UP CAMERA PERMISSION FOR TEST SOFTWARE / BROWSER APPLICATION.

INSTRUCTIONS ABOUT QUESTIONS

- The questions will be displayed one question at a time. The questions are RANDOMAISED so that no two candidates receive the same question at same time..
- Next button will take you to the next question. There is no previous button, either attempt or move forward to next question. You can't go back to attempted questions.
- The time remaining will be shown at the top of the page and will be updated every second.
- Clicking the Submit button shall submit all your answers and end the session. Once submitted, you will not be able to re-attempt the exercise.
- Each multiple-choice question has only one correct answer which should be selected for full marks.
- There may be some text questions where you are required to fill in answers using your keypad/keyboard. (**PLs READ INSTRUCTIONS ABOUT RESPONSES**)
- The instructions along with a specific question shall guide you to frame your answer text in correct format. For example, a comma separator is not to be used while writing figures like 10000. If you write 10,000 it shall be treated as a wrong answer. This is for your explanation.

PLEASE NOTE

- The Submit button will be enabled after suitable time has elapsed or you have answered all the questions allocated to you.
- It is compulsory to click the Submit button after completing the test.
- If you exceed the time limit, the system will prompt you and forcefully submit your answers. If you try to click Submit button after system has submitted it forcefully, it shall display a message "You don't have a valid MCQ session" as your answers are already submitted.

IMPORTANT

- Make sure your speakers & microphone are working and are ON all the time during test.
- Please do not close the browser without submitting the test properly.
- Please do not use the browser's back and forward buttons for navigating through the questions. Use the Next button on the test application page.
- Please do not navigate out of the browser, or open a new tab. All these actions are recorded in the server, and it will lead to disqualification. The repeated offences shall log you out & you won't be able to continue without admin interference.
- Please make sure that you have good bandwidth, uninterrupted internet connection. (At least 2Mbps upload & download speed).
- Let there be distance of at least 1.5 ft. in between camera/webcam of your laptop/monitor and make sure your desk space, face (wearing Face Mask not allowed) to upper chest portion is visible in the camera. Otherwise, you may be disqualified. In case, you are using external USB webcam, place it at the centre of the screen so that your face is straight looking in the device screen/monitor.
- Use of unfair means shall disqualify your candidature. Unfair means like wearing headphones, talking to someone on phone or in the same room, getting prompt from someone in your room, allowing someone else to look at your test screen, switching app/device, having your face not properly seen in the camera, going out of camera range, use of additional devices to access internet search & not following human proctor's advice/warning communicated to you through a pop-up message on your screen or voice over internet (VoIP).
- All your movements & test screen activities are getting proctored by auto/system invigilators & AI technology on real time basis. All red alerts raised by the system shall be video recorded to be reviewed by the selection committee for elimination before the result declaration.

- Reject incoming web calls during test. While taking tests on browser, any incoming web calls acceptance shall be treated as application switcher & doing so would log you out or submit your answer script (test response).
- If any connectivity issue is observed, the application might prompt you. You can try with another network if you have one available. If connectivity is very poor, you may get logged out with a message. You can continue the test after logging in again (within 15 seconds). The server will be notified of all re-login attempts. It is advisable to check your internet bandwidth (**PLs READ FAQ**) before sitting for the test as multiple instances of logging in/out because of internet connection may disqualify your candidature. The decision of the SFC committee shall be final in this regard.

INSTRUCTIONS FOR ANDROID APP ON YOUR MOBILE

Install the iCalibrator App **PAAS™** from the below URL on **Thursday 30th June 10:00 AM onwards** (Delete the previous version app before installing the latest version from the below URL)

<https://sfc2022exam.icalibrator.com/apks/icalibrator.apk>

LATEST VERSION 4.1.8

ENSURE android mobile app version should be displayed as Ver **4.1.8** (at the log-in screen)

PAAS V 4.1.7 → **ENSURE APP VERSION** should be **4.1.8**
(The app version in the image shown here is 4.1.7)

Assignment Server URL

https://sfc2022exam.icalibrator.com → **INPUT SERVER ADDRESS**
https://sfc2022exam.icalibrator.com
(Server address starts with **https:**)

NEXT

When you start the application for the first time it will ask you to allow **display over other apps**, please **enable** this option.

It will also ask your permission for taking video and audio, please give these permissions. **Otherwise, you will not be able to continue with the test.**

Enter your (as mentioned above)

LOGIN ID : SFC-2022 registration email address
PASSWORD : SFC-2022 registration password
SERVER URL : <https://sfc2022exam.icalibrator.com>

Click on the SIGN IN button. It will show you the following instructions. Click on < I Agree >

VPN connection request pop-up, iCalibrator wants to set up a VPN connection.....Only accept if you trust the source. Click < OK > and you may continue and take the test

Note : VPN doesn't install any additional package. For secure exams, VPN functionality is a part of our mobile application. The candidate can uninstall this app after the exam, and the VPN would be removed automatically.

GENERAL

- Once you continue from this page you will be shown the UPCOMING TEST that you have to take.
- The test will start at the stipulated time. If you login early, it will show a countdown message.
- The question paper would be displayed automatically when the test starts. When the stipulated test time is over, the application would automatically submit your test.

INSTRUCTIONS ABOUT QUESTIONS

- The questions will be displayed one question at a time. The questions are RANDOMAISED so that no two candidates receive the same question at same time.
- Right to Left swipes on screen will take you to the next question.
- The time remaining will be shown at the top of the page and will be updated every second.
- Clicking the **Submit button (in the Question Navigator)** submits all your answers and ends the session. Once submitted, you will not be able to re-attempt the test.

PLEASE NOTE

- It is compulsory to click the Submit button after completing the test.
- If you exceed the time limit, the system will prompt you and forcefully submit your answers.

IMPORTANT

- Make sure your speaker & microphone are working and on all the time during test.
- Please do not close the app without submitting the exercise properly.
- Please do not use the back, home, and application switcher buttons of your device during the test. Doing so would submit your answer script.
- Please make sure that you have good bandwidth uninterrupted internet connection. (At least 2Mbps upload & download speed).
- Let there be distance of at least 1.5 ft. in between device camera/screen and make sure your desk space, face (wearing Face Mask not allowed) to upper chest portion is visible in the camera. Otherwise, you may be disqualified.
- Use of unfair means shall disqualify your candidature. Unfair means like wearing headphones, talking to someone on phone or in the same room, getting prompt from someone in your room, allowing someone else to look at your test screen, switching app/device, having your face not properly seen in the camera, going out of camera range, use of additional devices to access internet search & not following proctor's advice/warning communicated to you through a pop-up message on your screen or via voice over internet (VoIP)
- All your movements & test screen activities are getting proctored by auto/system invigilators & AI technology on real time basis. All red alerts raised by the system shall be video recorded to be reviewed by the selection committee for elimination before the result declaration.
- Reject incoming calls during test. While taking tests on mobile, any incoming calls acceptance shall be treated as application switcher & doing so would submit your answer script (test response).
- If any connectivity issue is observed, the application might prompt you. You can try with another network if you have one available. If connectivity is very poor, you may get logged out with a message. You can continue the test after logging in again (within 15 seconds). The server will be notified of all re-login attempts. It is advisable to check your internet bandwidth before sitting for the test as multiple instances of logging in/out because of internet connection may disqualify your candidature. The decision of the SFC committee shall be final in this regard.

VERY IMPORTANT INFORMATION

- Capital or small letters both will be accepted for any answer. Living Modified Organisms or living modified organisms both are correct responses.
- For Fill in the Blanks, a box will appear in place of blank. The answer should be written in the box.
- Scientific names can be written without italics. Be sure that the spelling is correct
- 0B or 0C or 0F should be written as degree B or degree C or degree F.
- In case of chemical formula e.g. H₂O please write H2O.
- 5' to 3' (rotation) should be written as 5 to 3.
- In case of 10⁵, please write 10(5) or a^b as a(b)
- In case of 10⁻⁵, please write 10(-5) or a^{-b} as a(-b)
- Special characters like α, β, γ etc should be written as alpha, beta and gamma respectively.
- Comma SHOULD NOT be used in your responses.
 - a) 1,4 linkage should be written as 1 4 linkage
 - b) organize, operate, order should be written as organize operate order
- Apostrophe should not be used, e.g. Amber's Law should be written as Ambers Law.
- In case of two blanks in the same sentences unless the order of the blanks is important, any option can be written first.
 - a) Milk is ----- in ----- emulsion (answer sequence is important)
 - b) ----- and ----- are two components of milk. (answer sequence is not important)

FAQ

How early should I login before test time?

Even if you have taken your MOCK test successfully & you are sure that your system/mobile is properly configured to take main test, we recommend you to login at-least 45mins before the start of the test time. If logged in from Mobile App, you would see the upcoming test to be started at test time, a notification timer on the screen & in case you are logged in from Browser, you would see under CURRENT exam tab, the start time of the test in WHITE TEXT (active form). In case you see this text as GREYED OUT (inactive form), you have to configure your browser settings for camera permissions.

How am I going to get evaluated on MOCK test?

MOCK test, as the name suggest, is a dummy test which shall **NOT** get evaluated. This is to help you understand the test platform & the process so that you are familiarized with the software user interface. You get a chance to configure your mobile app and/or system (browser) beforehand & get resolution, if needed. MOCK test, as the name suggest, is a dummy test whose marks will not affect your final evaluation in the exam. The marks of the mock test will be shown to you just for information.

How should I download the latest mobile app or latest client browser version? How would I know that I have the latest mobile app on my phone or latest client browser version?

Pls read the instructions document. It would have mentioned a URL to download the application. The application version would also be highlighted. Mobile APP version is dynamic, so it keeps on updated, but the version remains same for that particular mock test cycle. The top left corner of the login screen of the APP has the version number mentioned, like PAAS **V 4.1.8**, it means app version is 4.1.8. You are advised to login, after mock test cycle is over, when exam server is switched ON anytime on or after 20th Sep,2022. If there is an update on mobile App version (current is **4.1.8**) / Browser Client Version (current is **3.1 Build 3**) /SEC application (version1.0), you shall get a prompt to update it. The apps shall get updated on auto-mode. Pls delete the previous version app & download the latest app from the same URL (if not updated on auto-mode)

and for browser update, pls clean your browser cache memory & refresh (CTRL + R) your browser to get the latest client version on browser.

What should I do if I get an incoming call (WhatsApp/GSM) during test?

We advise to REJECT all incoming calls during test. Accepting incoming call would log you out of the test and/or submit your test

What should I do if I have submitted by mistake?

Once a test is submitted by clicking on submit button, you will not be allowed to login again. So, press SUBMIT once you are through & sure to submit your test.

Can I go back on previous question & change my response?

No

I am getting an error “unable to parse the package” during mobile app installation, what should I do?

Android Mobile App requires minimum Android OS 7.0. Pls update the Android version or try on a phone which is NOT more than 5+ years old.

What should I do if my mobile app stops working during the test? Would I lose my marked responses?

Mobile App doesn't stop working like that but hypothetically, if it happens as speculated, you may login from the browser of the laptop/desktop (preconfigured during Mock Session). Software saves your responses on real time, so all your previously marked responses would not be lost. Any issue with your mobile app would be attributed to your individual device functioning &/or low internet speed, therefore you are advised to configure your device during mock & ensure uninterrupted data connectivity at minimum 2Mbps download & upload each for seamless experience.

What happens if I overshoot time & miss pressing the SUBMIT button?

Software saves your responses on real time & doesn't wait for the last moment to save your answer script. In case, you miss pressing the submit button at the end of the test time, software auto submits your answer script. Your phone or browser screen may get freezed so that any response after test end time is not registered and if you press SUBMIT button after auto-submission, a pop-up message says “YOU DON'T HAVE A VALID MCQ SESSION” to be submitted.

I dropped my mobile during test, it's broken. Can I switch to another device or application during test?

Software binds your login to a particular device with which you started your test. You would be allowed to switch device only when SFC test admin approves & releases your hardware ID.

All responses that you have marked from the previous device are saved & once you have switched to a new device, you shall be logged out automatically from the previous device. No two devices or applications can run with the same login at the same time.

(If you are one of selected meritorious candidates, you may be asked to bring your broken device during interview sessions for Hardware ID reconciliation. You may lose your candidature in case you fail to produce it before SFC committee. This practice ensures that only genuine cases shall get a fair treatment) This security feature is activated for MOCK exams as well so that you are not allowed to login from two devices in the same exam session, but you can take mock multiple times & each time with a different device so that you are able to set-up configuration of multiple devices.

Do I lose out on test time at each logout-login event during the test?

Yes, test time works mutually exclusive to all such individual log-out/log-in events.

I was connected with home Wi-Fi, but electricity went off or router failed during test. What should I do to avoid such situation?

You can keep your Wi-Fi & a mobile hotspot ON, make sure the credentials are saved so that your system is switched to either of the available networks on the fly without logging you out of the test window. Or alternatively, you may have Wi-Fi router connected to UPS at home

How should I get to know the internet speed?

For Browser, type www.speedtest.net & run GO. For Mobile, download SPEEDTEST app from Google Play Store. We recommend 2 Mbps (upload & download) speed for seamless experience.

What-if, I get logged out by mistake?

For all such claimed to be genuine cases, you shall be allowed to log back within 15 – 30 seconds, else your test shall get submitted. If you exceed 15 seconds (lower limit), you shall get a message CONTACT ADMIN, means your response is either on hold to be resumed by admin intervention or it's submitted at the expiry of 30 seconds (upper limit). No rollback requests shall be entertained once it's submitted. Your response shall get submitted at the 6th event of logging out even if you didn't exceed 15 seconds in all your five log-out and log-in attempts earlier.

How many times am I allowed to log-out and log-in?

In case re-login is allowed, there is no capping on the number of times, but each & every attempt is recorded under audit logs, and it shall impact your malpractice/cheating index. Your candidature stands to get disqualified if your relative CI score is higher than the human error /permissible limits irrespective of your scored marks.

Do I have a break during 3 hours test duration?

Yes, you shall get a 15-minute break between two rounds. The first round is of 60 minutes (Non-Technical) & the subsequent round after break is of 120 minutes (Technical). The auto-proctoring shall cease to work during break time. You may remain logged-in on the exam server & move away from your desk during break-time.

Will MOCK test be of 3 hours ?

No, unlike practice tests, MOCK test is to ensure that you get your device configuration & get yourself familiarize with the software application screen/workflow. A limited number of questions are uploaded for MOCK to run for less than 30 min (approx). There would be TWO MOCK test sessions per day, i.e., 62 sessions (One Test Session means both 1 Non-Technical & 1 Technical Test) in total from 1st July to 31st July, 2022. You may take mock test as many times as you wish during this period but the set of questions shall remain same so you may get repetitions in the multiple sessions. As you reach the last question (as limited set of questions in MOCK), NEXT button gets deactivated on Browser, since you can't go back so you are left with an option to submit your response. If you keep skipping or marking a wrong response in your easy round, you shall continue to get questions from easy bucket only and there is a remote possibility that you may encounter this scenario in your main exam as well. Skipping without answering will keep you in lower levels & you lose out on attempting higher mark questions.

How should I access my report ?

The report shall flash on your mobile screen as soon as you submit your response. On browser, you may click on View Report. The report shares data like date of exam, login time, logout time, duration, Total Marks, Secured Marks & subject wise break-up of marks. The Total Marks wouldn't be uniform for all candidates as it depends on how many questions of what difficulty level (Easy =1 mark, Medium=2 marks, Difficult=3 marks, Expert=4marks) a particular candidate has attempted.

How should I approach the test admin?

You may approach for technical issues after you have done all the processes as per the instructions document.

During MOCK: You would be given a PHONE NO (*test admin @ +91-9811812307*) to call / message. Pls mention your name, your email, password & describe the error. If you have a screenshot of the error, it would always be better to WhatsApp the above details & wait for the resolution. DON'T KEEP ON CALLING THE ABOVE NUMBER. YOU SHALL BE ANSWERED ON FIRST COME FIRST SERVE BASIS.

During Main Test: Only WhatsApp messages (no phone calls shall be attended) shall be responded & candidates who missed MOCK tests won't be given any technical support during main tests.